

ELEVATE

Elevate your space and engage your customers.

ELEVATE LED SERIES 0.9mm, 1.2mm, 1.5mm

2025 ELEVATE LED SERIES FIXED INDOOR LED MADE FOR ACTIVATE THE SPACE





Masters in the Art of LED

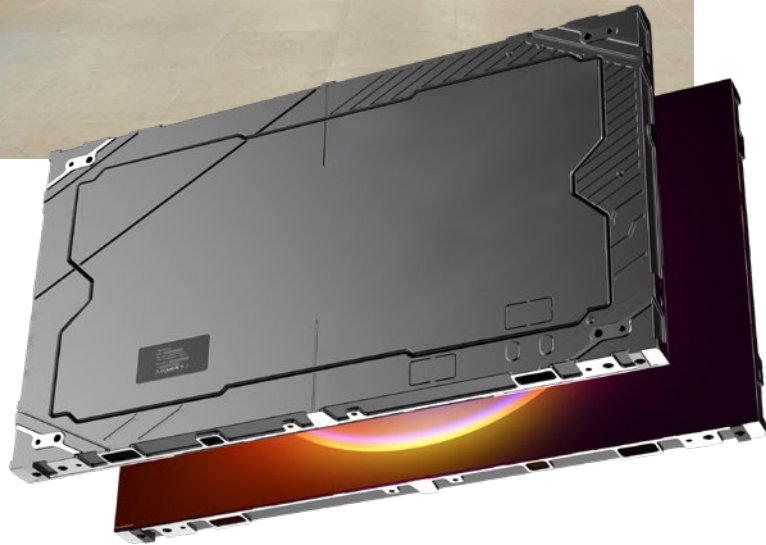
Welcome to Activate the Space, with nearly two decades of experience in the AV industry, I founded Activate the Space to bring unmatched expertise and innovation to our clients.

We present the most advanced LED systems, meticulously crafted for superior performance.

At Activate the Space, our dedicated account managers, top-tier technical support, and industry thought leaders work tirelessly to help you master the art of LED technology. I invite you to explore our brochures and experience innovation at its finest.

Warm regards,

Chris Pelzan



Specifically Designed for Retail

For years, retailers have used LCD TVs because they're affordable and look sharp. But they have two big downsides: the visible borders (bezels) between each screen and a shorter lifespan that leads to higher costs over time.

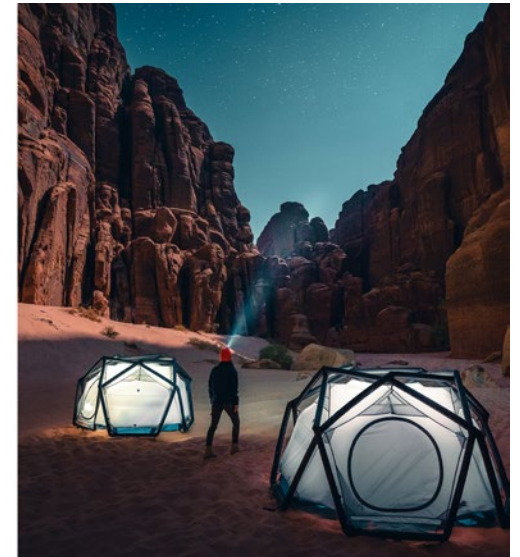
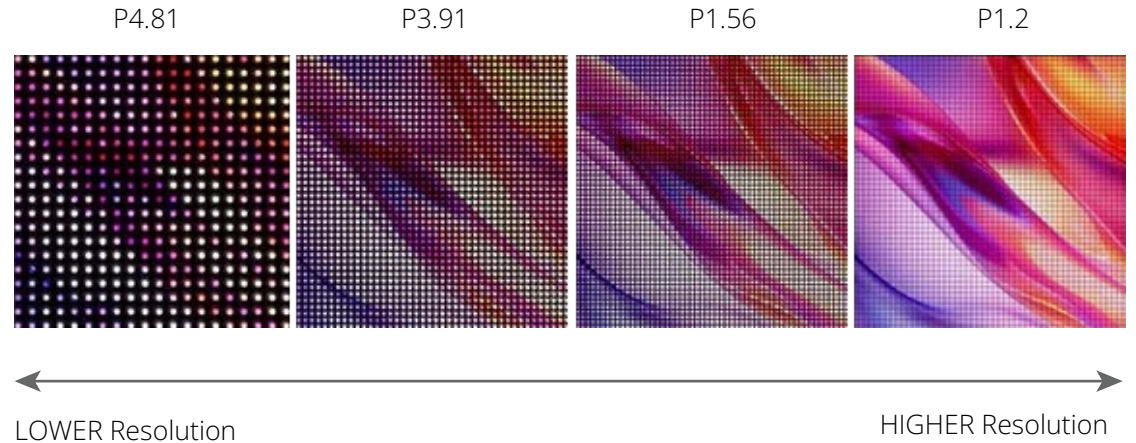
Direct-view LED fixes those issues. With no borders and a design that can scale to any size or shape, LED walls create a seamless, eye-catching display that lasts for years.

That's why we built Elevate — an LED solution made for retail, combining high resolution, long-term reliability, and outstanding value.

Clarity That Customers Notice

In many retail stores today, LED walls don't look as sharp as they could because they use older technology with bigger gaps between the tiny lights (pixels). This results in lower resolution screens, and often the displays aren't in the standard 16:9 format that matches the content people are used to watching on TVs, phones, and monitors.

With Elevate, we fix those issues. Our LED walls are designed to match the 16:9 format and support Full HD, 4K, or higher resolutions. That means your customers see crisp, vibrant visuals they expect, and your team saves time and money because standard content fits perfectly without extra work.



Built to Last

The issues with high-pixel-pitch products go beyond just lower resolution and less vibrant visuals. Most of these products use SMD (Surface Mount Device) packaging, a cost-effective solution for pixel pitches above 2mm—or a derivative called GOB, where a silicon epoxy coating is applied over the SMD for added protection.

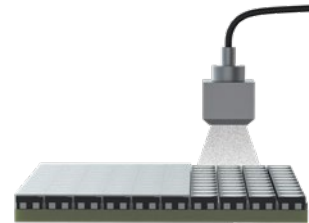
Both SMD and GOB are individual pixel packaging technologies, which require significantly more soldering points and additional steps to package each diode compared to module-based solutions like flip-chip COB. With SMD or GOB, the LED failure rate is higher and more noticeable, often resulting in an entire row or column of LEDs failing.

Our Elevate line uses state-of-the-art flip-chip COB, where the LED chip is mounted directly onto the PCB, eliminating extra soldering and packaging steps. This makes Elevate displays far more reliable than either GOB or SMD solutions.



SMD – Good

- ✓ Cost-effective for larger pixel sizes
- ✗ More solder points = higher risk of failure



GOB – Better

- ✓ Protective coating for added durability
- ✗ Still limited by SMD's reliability issues



COB – Best

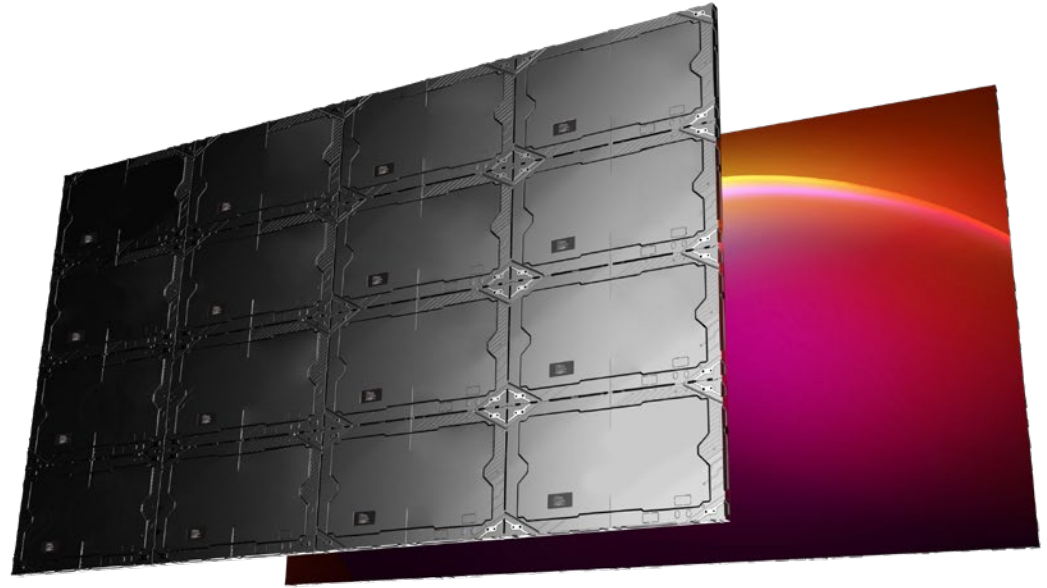
- ✓ Direct chip-on-board design
- ✓ Fewer failure points, impact resistant
- ✓ Most reliable and longest-lasting option
- ✓ Energy efficient

Slim, Simple, and Hassle-Free

Our Elevate LED panels are designed to make your life easier. They're over **24% lighter and 17% thinner than most LED panels on the market**, which means simpler handling and faster installation. With our slim wall-mount brackets, Elevate can be mounted directly to the wall with no rear clearance required. This not only helps with ADA compliance but also saves valuable space, time, and installation costs.

Reliability and consistency are built in. Elevate uses carefully selected LED wafers that meet strict color and brightness uniformity standards. This means panels can be installed in any order or configuration without worrying about pre-set arrangements or time-consuming full-wall calibration.

And when maintenance is needed, it's just as simple. Modules can be replaced directly from the front — just pop out a module and snap in a new one. Unlike other COB solutions that require recalibration or following the manufacturer's preset installation order, **Elevate is designed for easy, no-hassle servicing.**



Specifications

Activate the Space Elevate Series LED panel shown.

Specifications	Elevate 0.9	Elevate 1.2	Elevate 1.5
LED Type	Flip-Chip COB	Flip-Chip COB	Flip-Chip COB
Pixel Pitch (mm)	0.9	1.25	1.56
Panel Dimensions (W*H*D)/(mm)	600x337.5x32.3	600x337.5x32.3	600x337.5x32.3
Panel Weight (kg)	3.4	3.4	3.4
Pixel Per Panel (w, h)	640*360	480*270	384*216
Panel Material	Die Casting Aluminum	Die Casting Aluminum	Die Casting Aluminum
Module Dimensions (W*H)/(mm)	150x168.75	150x168.75	150x168.75
Brightness (nit)	600-800	600-800	600-800
Refresh Rate (Hz)	≥3840	≥3840	≥3840
Grayscale (bit)	13	13	13
Contrast Ratio	15,000:1	15,000:1	15,000:1
Color Temperature (K)	6500	6500	6500
Viewing Angle (H/V) (°)	160/160	160/160	160/160
AC Operating Voltage (V)	100~240	100~240	100~240
Power Consumption (Max./Avg.) (W/m ²)	350/117	285/95	300/100
Storage Temperature (°C)	-40~ + 55	-40~ + 55	-40~ + 55
Operating Temperature (°C)	-10~ + 40	-10~ + 40	-10~ + 40
Storage Humidity (RH)	10%~85%	10%~85%	10%~85%
Operating Humidity (RH)	10%~60%	10%~60%	10%~60%
IP Rating (Front/Rear)	IP40/IP21	IP40/IP21	IP40/IP21
LED Lifetime (H)	100000	100000	100000
Module Maintenance	Front	Front	Front
PSU & Other Maintenance	Front	Front	Front
Panel Installation Type	Wall	Wall	Wall
Certification	CE, UL, ETL, FCC	CE, UL, ETL, FCC	CE, UL, ETL, FCC

Specifications subject to change. Please contact Activate the Space for updated specifications.



We Create Experiences.

©2025 Activate the Space, LLC. Specifications and design are subject to change without notice. Non-metric weights and measurements are approximate. Simulated screen images. All brand, product, service names and logos are trademarks and/or registered trademarks of their respective manufacturers and companies. See activatethespace.com for detailed information.

www.activatethespace.com | 800-306-0620
